



Snapchat Snap Map

The “Snap Map”, is a feature within Snapchat that allows users to keep up to date with the locations of their friends, in addition to viewing Snaps and Stories.

Snap Map is unique to anything on other social media platforms. While you can tag your location on Facebook, Twitter, and Instagram, Snap Map turns sharing your location into a visual experience.

There are a lot of elements that you can find on the map, so you may be initially confused as to what’s what, how to navigate various features, and how to update your settings.

How to use Snap Map

Before you are able to use Snapchat Map and start exploring the world, you need to enable locations services.

If you have an iPhone, open up your settings and scroll to Privacy. Once there, tap the switch to turn on location services.

Then, scroll to Snapchat and select “while using the app.”

This means that your location will only update when you’re using Snapchat, so you don’t have to worry about it updating in the background and draining your battery or using all your data.

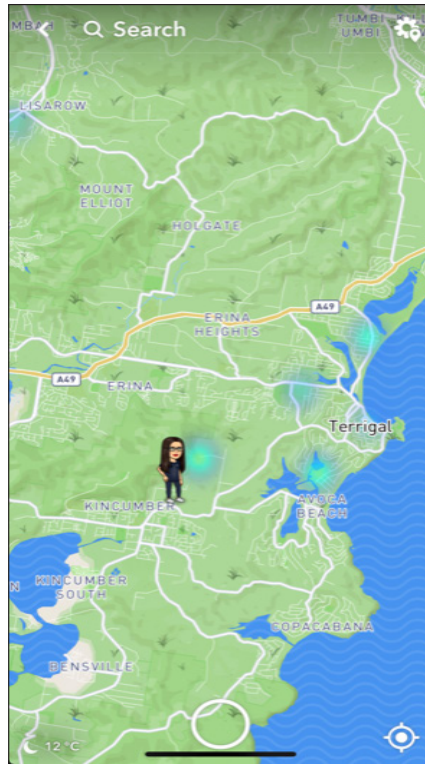
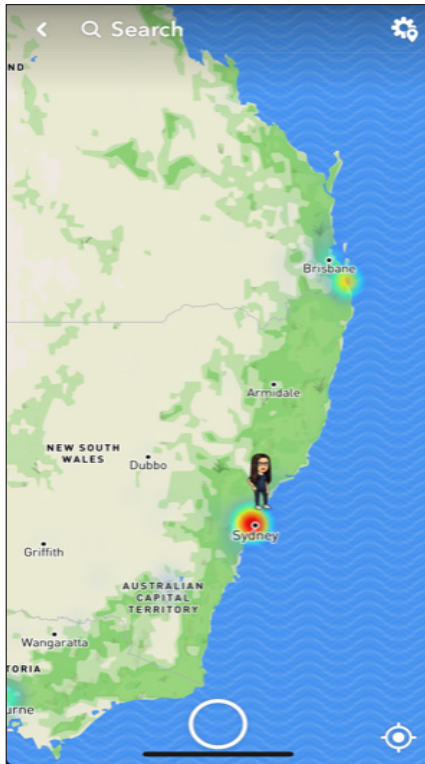
How to open Snap Map

If you’re an iPhone user, pull down the camera screen. If you’re on an Android device, pinch your fingers inward from the camera screen.

Features

Whether you’re in a highly populated city or a country town, you’ll notice that Snap Map features a heat map that shows where the most Snaps are being taken (if you don’t see this, zoom your view out to see more areas of the map).

Areas that are light blue or green are where Snaps are being taken. Areas that are yellow, orange, or red have an extensive amount of Snaps being taken. If you tap your screen on areas of the Snap Map that show one of these colours, you'll be able to see Snaps that people have taken and submitted to "Our Story."

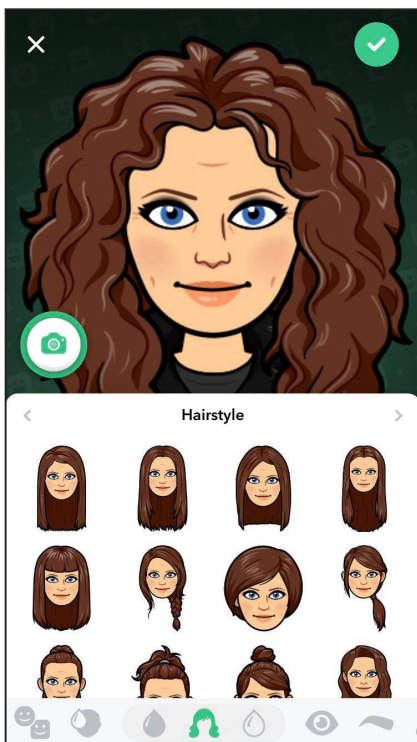


Stories

Stories differ from Snaps as these are created around specific locations or events. This can be anything from a museum, sporting event, or popular monument.

Friends

If your friends on Snapchat have their location enabled, you'll see their Bitmoji on the Snap Map. If you aren't sure which Bitmoji is who, tap on them to be shown their name and when they were last active on Snapchat. A Bitmoji is your own personal emoji. Your Bitmoji represents you all around Snapchat. You can share your Bitmoji in Chat, change its outfits, and even bring it to life with 3D Bitmoji and Bitmoji Party!



Highlighted Event

Snapchat features highlighted events all the time on the Snap Map. To find these events, either tap the specific event or compass icon directly above the “capture” button on the Snap Map screen. Once you do, you’ll be taken to the event, where you can see a brief description and Stories that have taken place there.

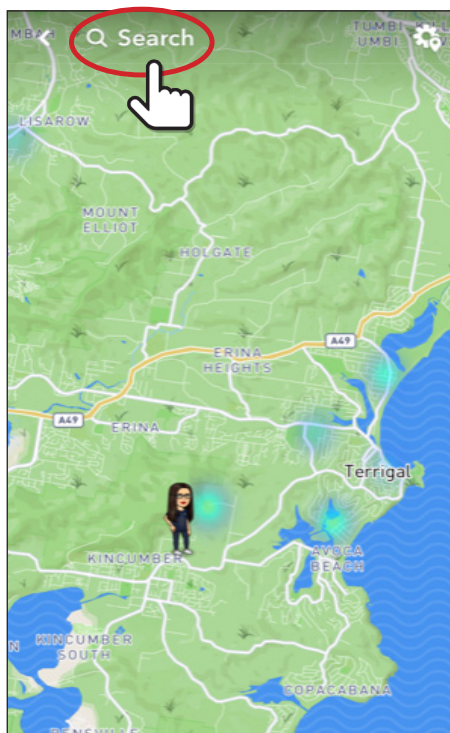
Monuments

Depending on where you are, you may also see various monuments on the Snap Map. Places such as The Sydney Opera House and The Harbour Bridge and others are all displayed with a unique icon. If you’re looking for more details about that monument, tap its icon to see additional information.



Search Bar

At the top of Snap Map is the Search bar. This comes in handy if you’re looking for a specific friend, event, or monument.

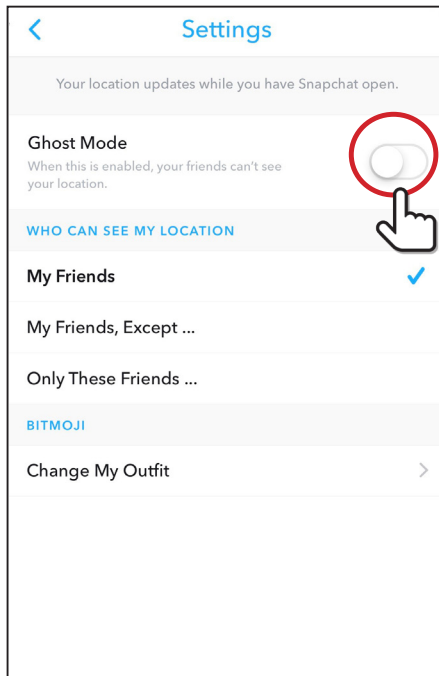


Sharing your location on Snap Map

The gear in the top right corner of the Snap Map. There, you can update exactly who does, or doesn't, see your location.

Ghost Mode

Tap this on if you aren't interested in anyone knowing where you are or what you're doing on Snap Map. This mode will automatically enable if you haven't been active on Snapchat for more than two hours.



My Friends

Choose this option if you'd like all your friends on Snapchat to see your location details. Be aware that if you post a snap video to our story in this mode you may make that video snap public for everyone to see.

My Friends, Except

This option is great if you have a select two or three friends on Snapchat that you don't want knowing where you are. Just scroll through your friends list and choose who won't be able to see your location.

Only These Friends

When you choose this setting, you can scroll through your friend list and pick which friends are able to know where you are.

w: safeonsocial.com
e: wecanhelp@safeonsocial.com

No part of this e-book or its associated modules may be reproduced or transmitted by any person or entity in any for by any means, electronic or otherwise including photocopying, recording or scanning or by any information storage without prior permission other than the licensor who is licensed to use this information on their website, in newsletters and in print and has been granted permission from the publisher under an annual license.

The publisher, authors, licensee, licensor and their respective employees or agents will not accept responsibility for injuries or damage, physical or emotional occasioned to any person as a result of a social media use or any other activities described in this e-book.

Whilst every attempt has been made to ensure that the information in this e-book is accurate, it is the nature of social media to be constantly changing. Therefore, Safe on Social Media Pty Ltd gives no guarantees to the completeness or accuracy of the contents of this guide.